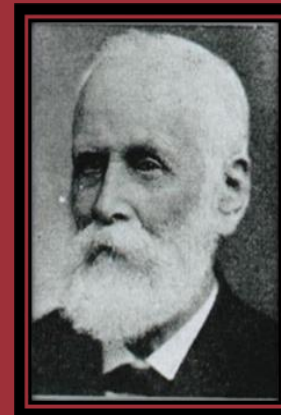
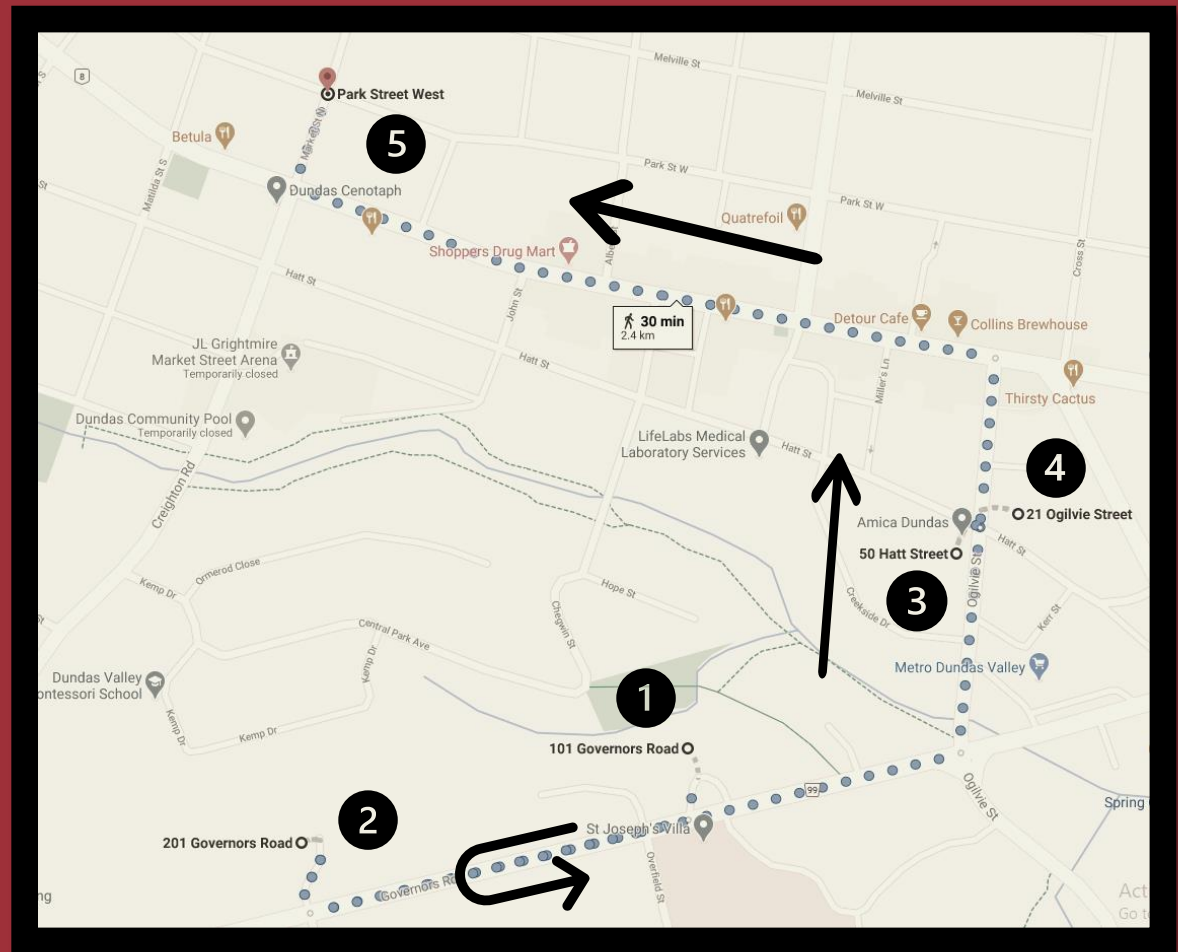




## 2021 HISTORIC DUNDAS WALKING TOURS: *JOHN BERTRAM, INDUSTRY IN DUNDAS AND BERTRAM & SONS COMPANY INC.*

Now tranquil and picturesque, Dundas was once home to one of the **largest manufacturing industries in Canada!** At the heart of that industry was **John Bertram**, who created **John Bertram & Sons Company Inc** in 1836. Although it does not exist today, the company had a huge impact on Dundas, which is still visible today!

This self-guided tour of **Dundas, Ontario** will explore the life of John Bertram and the creation of John Bertram & Sons Company. During this tour, you will also learn more about the **Bertram Family** and Canadian history!



*Pictured: An aerial view of Bertram & Sons Works (left) and John Bertram (right).*

**Who:** Anyone interested learning more about the history of Dundas!  
(Recommended ages: 8+).

**Where:** This tour will take you throughout Dundas, including on the sidewalks of busy streets. Please plan accordingly.

**What will you need:** Comfortable shoes and a water bottle!

**Prior Knowledge:** None needed!

**Duration:** 30 – 40 minutes on foot.

## 1 101 Governors Road – “Glenhome”

Now home to apartments buildings, "Glenhome" (pictured right) was constructed by John Bertram in 1884. John was born in Scotland in 1829 and emigrated to Canada on the "Clutha" with his wife Elizabeth in 1852.

Although John first landed in Montreal, a fire the burned down much of the city forced him to look in other places for work. After working in Toronto for a little while, an acquaintance told John that he should move to Dundas and work at Gartshore's



Foundry. Taking his suggestion, John moved to Dundas in 1853, changing the town forever. **How would you feel if you had to move across the world, away from all your family and friends?**

## 2 201 Governors Road– Dundas Baptist Church

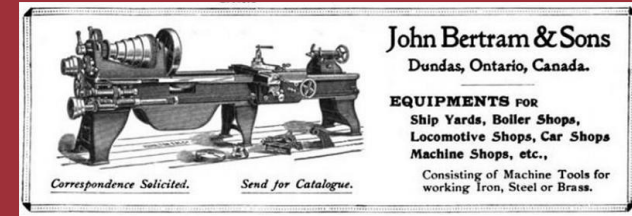
After moving to Dundas and working at Gartshore's for a couple years, John started to create his own company. In 1860, Bertram partnered with a man named William McDonald. This site was home to their factory, but the building burned down in 1861 and they had to close. In 1863, John Bertram would partner with another Scottish immigrant named Robert McKechnie. The two men created Canada Tool Works, which produced machine and wood working tools. McKechnie retired in 1886, leaving the business to John.



*A photo of John, probably taken around 1886.*

## 3 50 Hatt Street - Bertram & Sons Company Ltd.

Following the retirement of Robert McKechnie, John's sons Henry, Alexander, and Jim took new roles within the company and the name was changed to Bertram & Sons. Although the company first produced woodworking tools (like band saws and molding machines), the expansion of Canada's railway system created a demand for machine tools. Soon, the company was producing drills, shears, bolt cutters, and milling machines (pictured below). By 1886, the company employed over 150 workers. This location (pictured on the front) was home to their machine shops and office buildings.



**Do you think it would have been hard to run a factory?**

## 4 21 Ogilvie Street – Pratt and Whitney Small Tools

As the demand for machine tools continued to grow in Canada, so did Bertram & Sons. In 1905, the company merged with a U.S. company called Niles-Beement-Pond Co – this building was constructed as their headquarters, directly across from the Bertram offices. When the First World War began, Bertram & Sons began producing bombs for the British army (pictured right). By the end of the war, the company employed over 1,200 men, eight times as many employees as they had in 1886. Unfortunately, John Bertram died in 1906 and did not see how big his company became - his son Alexander became President. **Do you think Alexander was scared or excited to start running the family business? Would you want to work with your family?**



## 5 139 Park Street West – Dundas Museum

The company continued to remain successful into the mid 1900's. Then-President Alexander Bertram was knighted by King George V for the company's help during World War Two, and the company invented several improvements for their machines. However, by the 1960s, the Bertram's were unable to compete with international manufacturers and sold the company in 1964. In this location, you will see one of the tools Bertram & Sons used during their existence.